

---

# REGIONAL WORKFORCE DEVELOPMENT TEEN CENTER

---

BOYS & GIRLS CLUB OF THE HEARTLAND



The Boys & Girls Clubs of the Heartland is pleased to present a concise overview of our strategic initiatives aimed at effecting lasting, transformative change in the lives of the youth across generations.

The ensuing sections underscore the meticulous, forward-thinking groundwork that has been undertaken to realize a project of this magnitude that aligns with a truly exceptional once-in-a-lifetime opportunity.

We cordially invite you to engage with us to explore our vision and to peruse the comprehensive prospectus, offering an in-depth portrayal of our mission and objectives.

# About BGCH



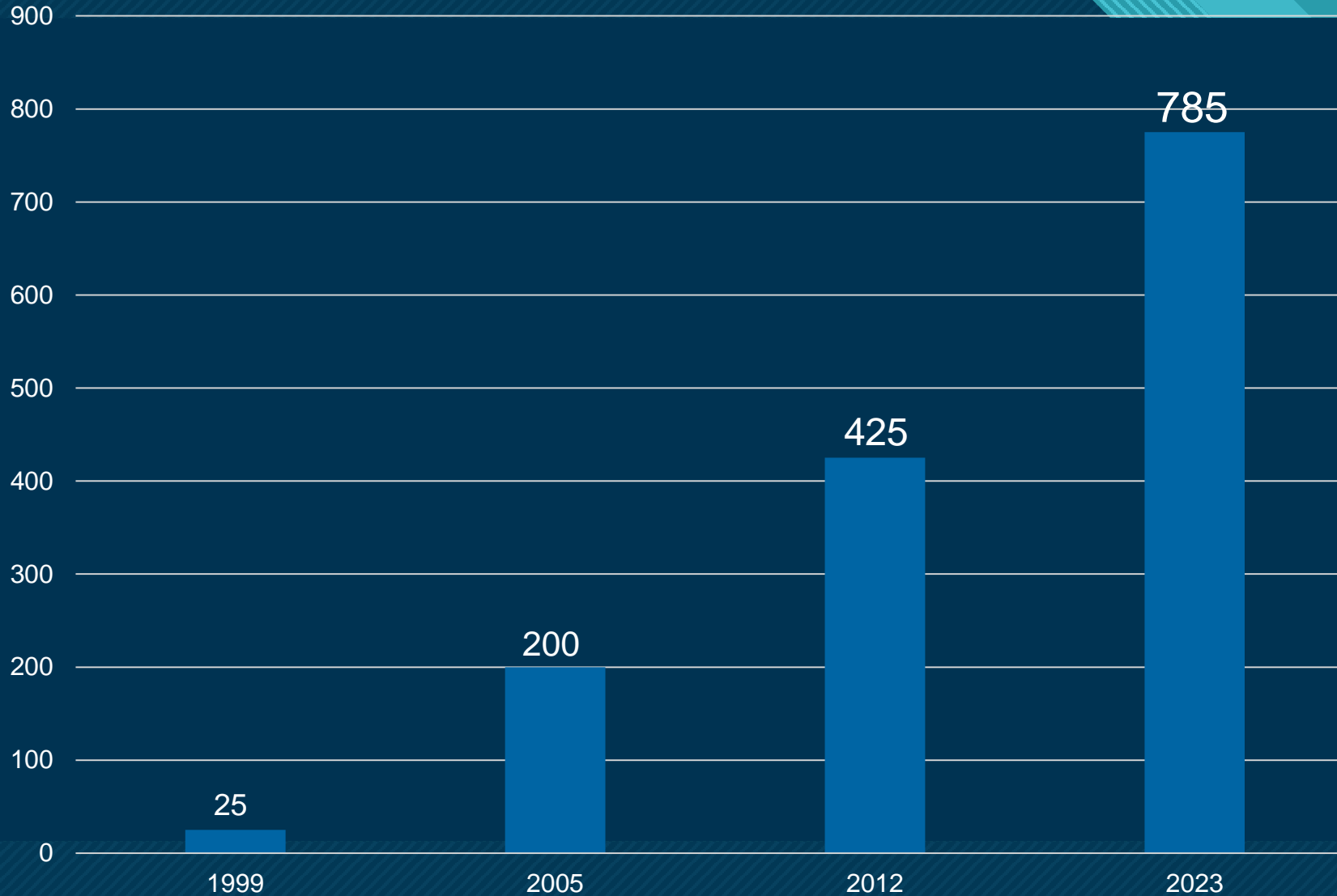
**BOYS & GIRLS CLUB**  
OF THE HEARTLAND

- After-school and summer program that serves school-aged youth, ages 6-17.
- Operates by receiving donations from individuals, organizations, and governmental grants.
- Owned and operated by our Board of Directors. We are not “owned” by Boys & Girls Club of America

# Enrollment through the years...



**BOYS & GIRLS CLUB**  
OF THE HEARTLAND



# BGC 2017 Strategic Plan



## Board Transformation

- ✓ From No Diversity to a Diverse Board (age, profession, gender & race)
- ✓ Grow board from 17
- ✓ Informed board on Responsibilities, Mission, and Fundraising
- ✓ Informed Functioning Committees

## Resource Development

- ✓ Informed Community
- ✓ Goals focused on Community needs.
- ✓ Strong Annual Campaign
- ✓ Develop additional funding streams/local fundraising
- ✓ Start an endowment
- ✓ Planned Giving
- ✓ Capital Campaign

## School Outreach

- ✓ Build on relationship with PB R-1 School District
- ✓ Partnership with Three Rivers College
- ✓ Increase from 7 sites to 10 sites
- ✓ Expand services throughout the Southeast Missouri Region.

## Capital Campaign

- ✓ Land/building locations for standalone club
- ✓ Building dedicated to 7<sup>th</sup> – 12<sup>th</sup> grade members
- ✓ Workforce Development
- ✓ Close proximity to Three Rivers College

**Completed by 2025**

# 2020 Comprehensive Assessment

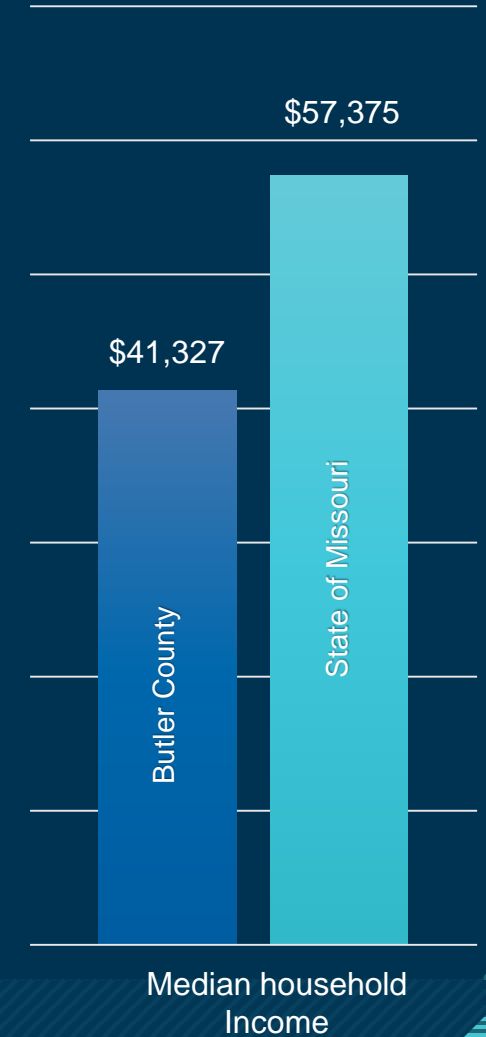
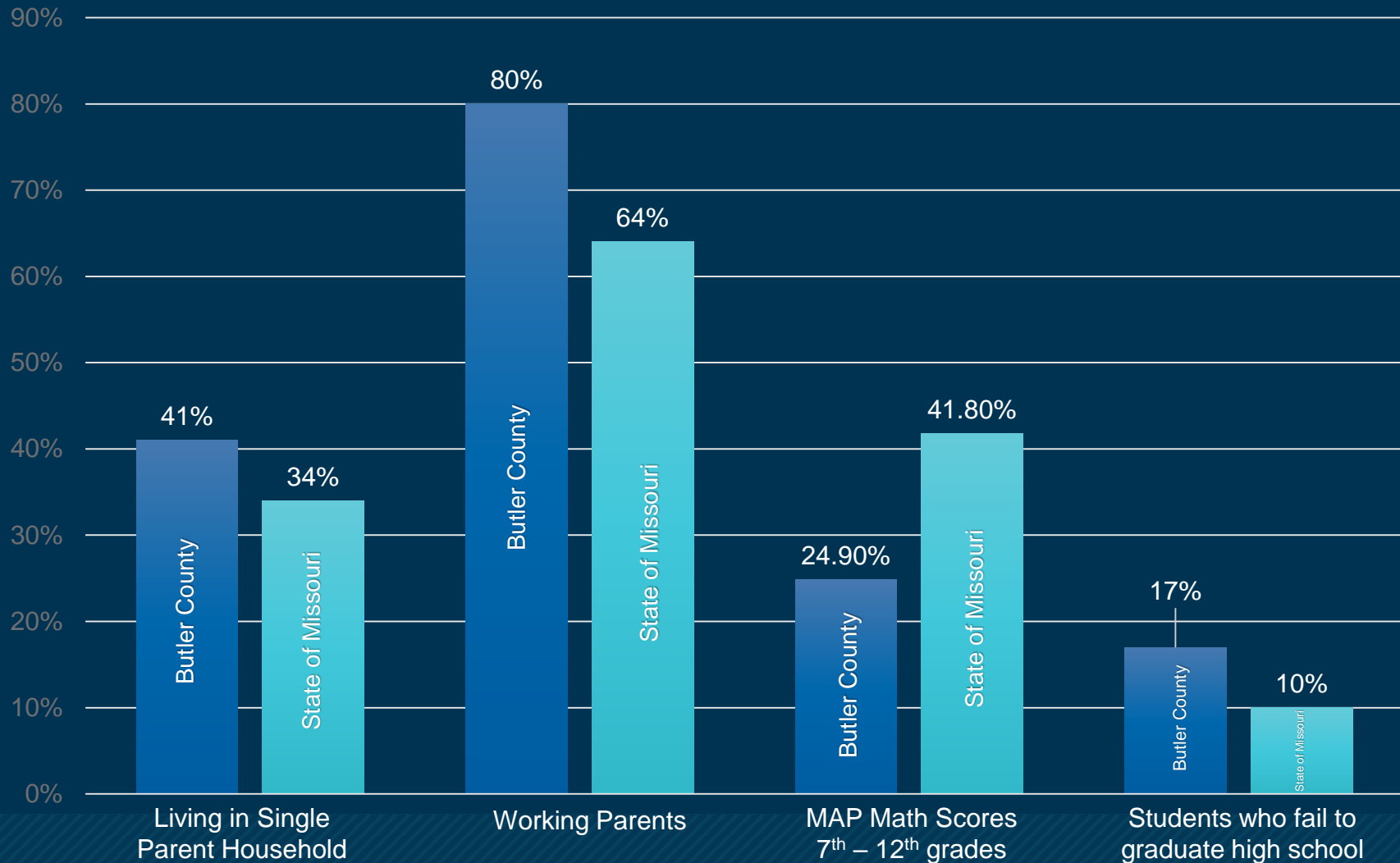


BGC, in partnership with the Poplar Bluff School District, facilitated a comprehensive assessment of student needs throughout 2020-2021. This process included over two dozen interviews with school principals, teachers and administration, community organizations, counseling centers, law enforcement, healthcare providers, the housing authority and stakeholders across the community. In addition, 157 teachers, 206 parents, and more than 1,000 student surveys were collected and reviewed. BGC and its stakeholders, including students, parents, teachers, school administrators and community stakeholders, aggregated and reviewed student academic assessment and achievement data; community survey data; and a plethora of existing research on student needs, including: Missouri Department of Health and Senior Services' Missouri Information for Community Assessment (MICA) data, Missouri Kids Count, and Missouri Department of Elementary and Secondary Education (DESE) data.

# 2020 Comprehensive Assessment



**BOYS & GIRLS CLUB**  
OF THE HEARTLAND



# Great Futures Program

TRC Partnership



## All BGC Sophomore Students

### BGC Sophomore Students

#### Fall Semester

ACAD	101	Academic Life Strategies	3
------	-----	--------------------------	---

### BGC Sophomore Students

#### Spring Semester

IST	100	Computer Applications	3
-----	-----	-----------------------	---

## General Education Pathway

### BGC Junior Students

#### Fall Semester

GOVT	121	National and State Government	3
------	-----	-------------------------------	---

### BGC Junior Students

#### Spring Semester

SCOM	111	Public Speaking	3
------	-----	-----------------	---

### BGC Senior Students

#### Fall Semester

ENGL	111	College Writing	3
------	-----	-----------------	---

### BGC Senior Students

#### Spring Semester

MATH	161	Mathematical Reasoning and Modeling	3
------	-----	-------------------------------------	---

## Career Pathway

### BGC Junior Students

#### Fall Semester

MEDR	135	Applied DC and AC Circuits	3
ELEC	115	Blueprint Reading and Gauging	3

### BGC Junior Students

#### Spring Semester

ELEC	117	Industrial Electronics Controls	3
ELEC	207	Industrial Electronics Applications	3

### BGC Senior Students

#### Fall Semester

ELEC	216	Programmable Controller Systems	3
MAFT	119	Robotics I	3

### BGC Senior Students

#### Spring Semester

MAFT	219	Robotics II	3
MAFT	255	Hydraulics and Pneumatics	3



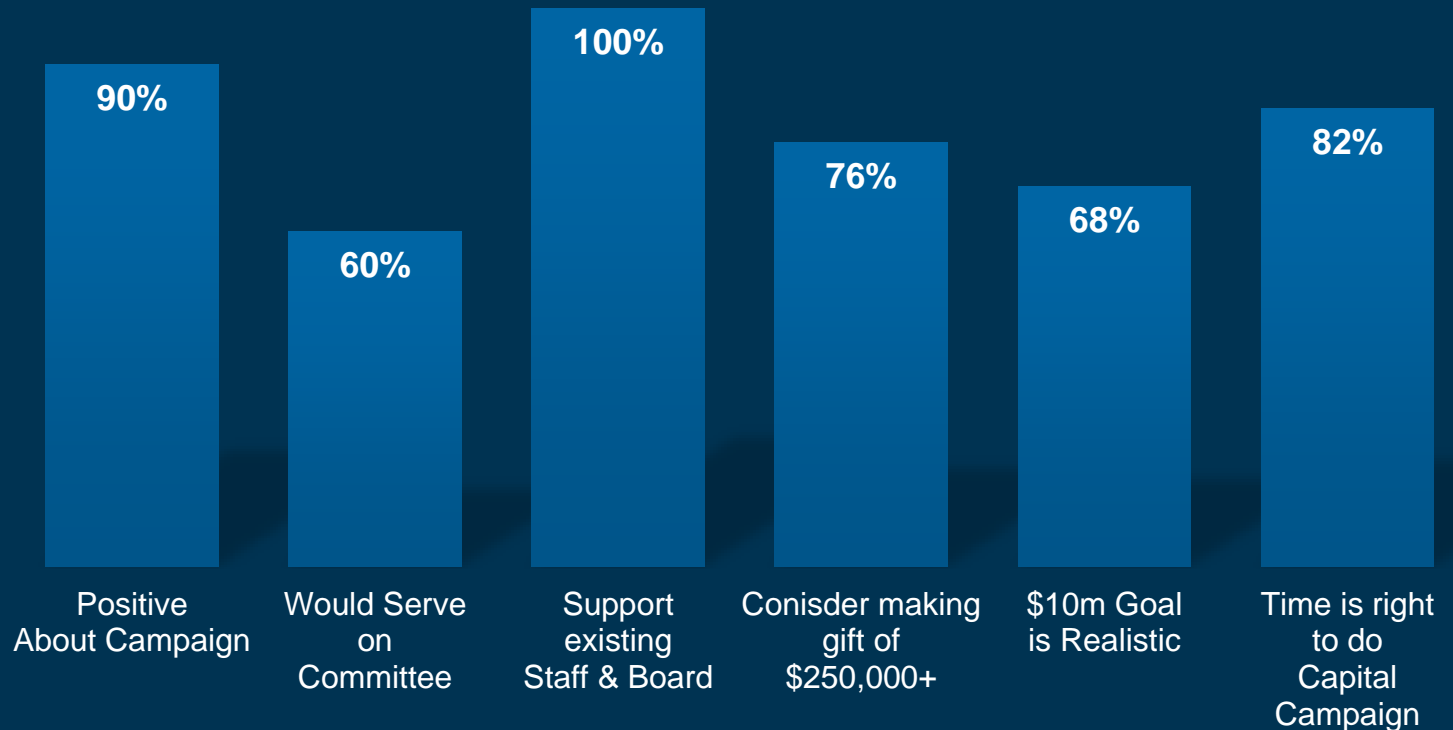
# Feasibility Study Final Report

October 2022



% from Interviews and Surveys

61  
Strategic  
Interviews &  
Surveys



# Feasibility Study Findings



- |    |   |    |  |
|----|---|----|--|
| 01 | Move forward with a major gift campaign upward of \$10 Million            | 06 | Prepare donor relevant materials and content |
| 02 | Build out the case to clearly articulate BGCH's impact with Great Futures | 07 | Implement briefing meetings                  |
| 03 | Activate a strategic communication plan to engage key stakeholders        | 08 | Initiate a planned giving program            |
| 04 | Implement a campaign leadership structure                                 | 09 | Institute data management best practices     |
| 05 | Establish donor engagement pathways                                       | 10 | Resource the campaign                        |

## CAPITAL CAMPAIGN KICKS OFF

# Boys & Girls regional teen center planned

By **DONNA FARLEY**  
 Editor

Boys & Girls Club of the Heartland has announced a capital campaign that hopes to raise \$10 million to construct a regional teen center.

The center would serve students from 26 high schools, with a goal of opening in Poplar Bluff in the fall of 2026, according to the Board of Directors.

"We've done a ton of

work on this," shared Chris Rushin, chief executive officer. "We worked with a consulting group, CCS Fundraising, and the results say the community can and would support this."

The center would serve between 120-150 students, offering and expanding on programs already in place at Boys & Girls Club, which includes access to career training and college courses.

"This will supercharge

our Great Futures College program," Rushin said. "We're working closely with the (Poplar Bluff) Technical Career Center. ... We have an incredible college right here in our backyard. We're going to make sure it's available to every one of our kids."

The project has already been awarded \$4 million

See **TEEN CENTER/Page A2**



Image provided

This artist's rendering shows the planned Boys & Girls Club of the Heartland Regional Teen Center, which hopes to serve students from over 60 high schools and open in the fall of 2026.

## TEEN CENTER

FROM PAGE A1

in state funding, Sen. Jason Bean shared Monday, during a luncheon for members of the Greater Poplar Bluff Area Chamber of Commerce. This includes \$2 million that requires an additional \$2 million in matching funds to be raised by the group, Bean shared, as well as \$2 million that does not require matching funds. These came from the

state's 2023 and 2024 fiscal years respectively.

The regional center is planned for a location on the campus of Poplar Bluff High School, with a long-term lease approved by the district in April.

"This strategic site selection aims to eliminate the logistical and financial burdens associated with transporting over 60 high school student members currently served by BGCH," BGCH leader-

ship said in a press release. "The establishment of this facility will also extend its benefits to neighboring schools, which rely on the technical career center."

Boys & Girls Club has identified 26 school districts within a 45-minute drive of Poplar Bluff that could benefit, Rushin said.

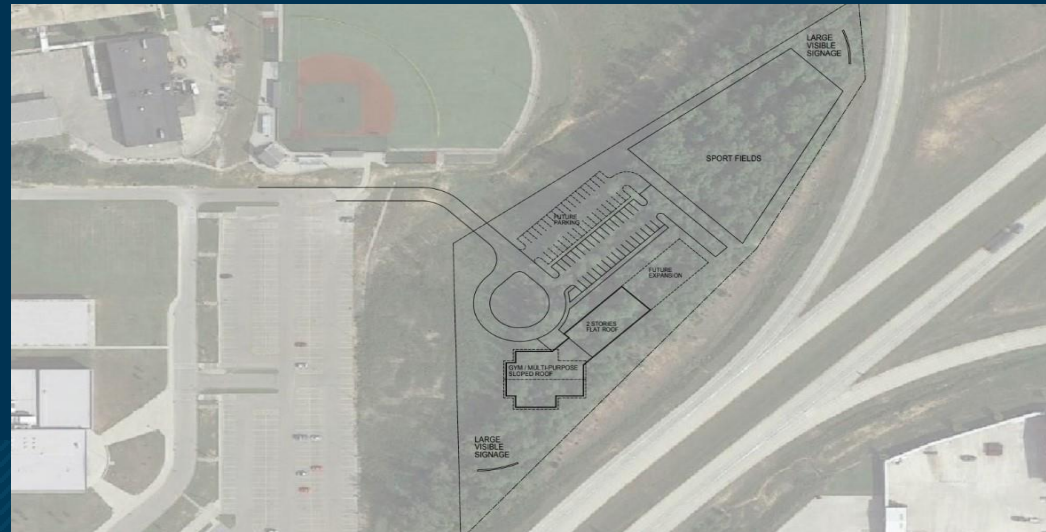
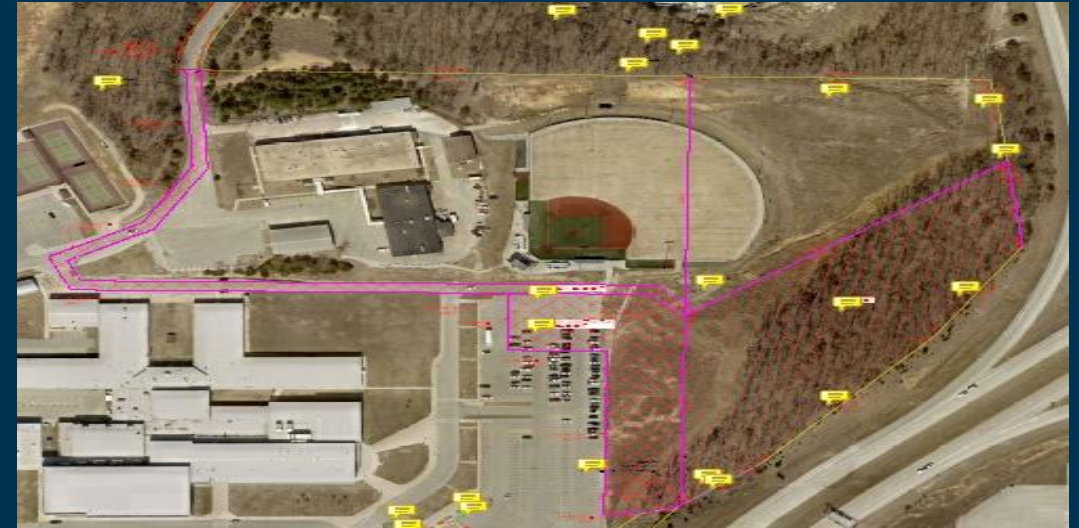
The group already can provide up to 18 college credits for the teens they serve, staff said. In the last school year, 37 students

from Poplar Bluff, Neelyville and Doniphan took college courses through the Boys & Girls Club program. The club also offers access to certified work training programs.

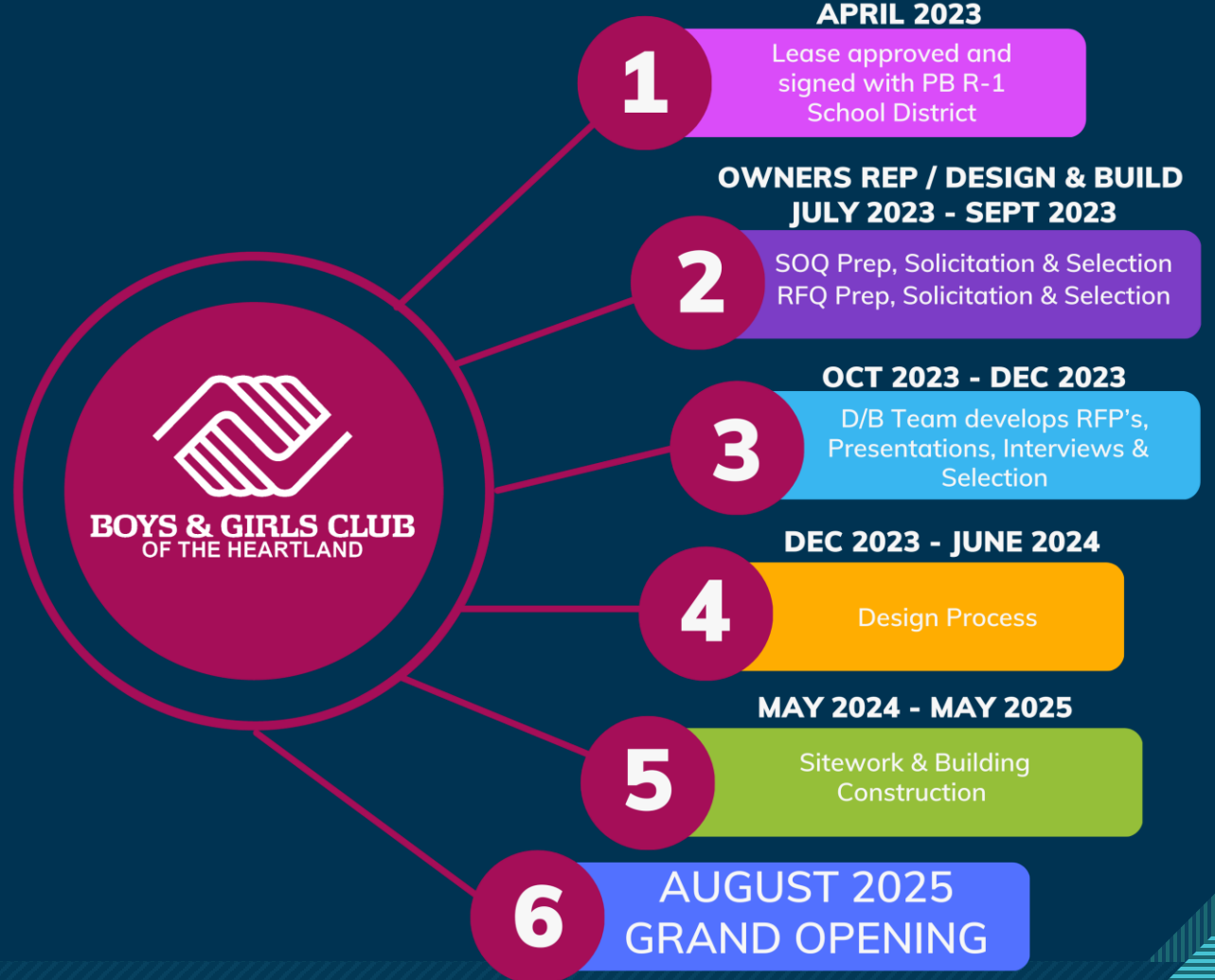
"A profound partnership between BGCH and Three Rivers College promises to substantially enhance workforce development in the community, yielding an influx of over 150 qualified labor candidates each year," the board said.



# Our Site



# Time Line





# Planned Partnering Schools



**BOYS & GIRLS CLUB**  
**OF THE HEARTLAND**

- 
- A map of East Carter County, Missouri, with a star marking Poplar Bluff. The map shows various towns and roads. The towns listed on the map include: Poplar Bluff, Greenville, Clearwater, Ellington, South Iron, Twin Rivers, Malden, Campbell, Holcomb, Dexter, Richland, Puxico, Bloomfield, Bernie, Zalma, Van Buren, Risco, Clarkton, Corning, and Piggott. The map also shows major roads like US-49, US-60, US-62, US-67, US-139, US-141, US-162, and US-412.
- Poplar Bluff
  - Greenville
  - Clearwater
  - Ellington
  - South Iron
  - Twin Rivers
  - Malden
  - Campbell
  - Holcomb
  - Dexter
  - Richland
  - Puxico
  - Bloomfield
  - Bernie
  - Zalma
  - Van Buren
  - Risco
  - Clarkton
  - Corning
  - Piggott



# **BOYS & GIRLS CLUB**

## **OF THE HEARTLAND**

For more information, please contact

Chris Rushin  
Chief Executive Officer  
[chris@bgcpb.org](mailto:chris@bgcpb.org)  
573.776.1690

Terri McCormick  
Director of Development & Finance  
[terri2@bgcpb.org](mailto:terri2@bgcpb.org)  
573.776.1690